



DESIGN DEVELOPMENT PRESENTATION

December 4, 2017

MOUNTAIN LAKES SCHOOL DISTRICT



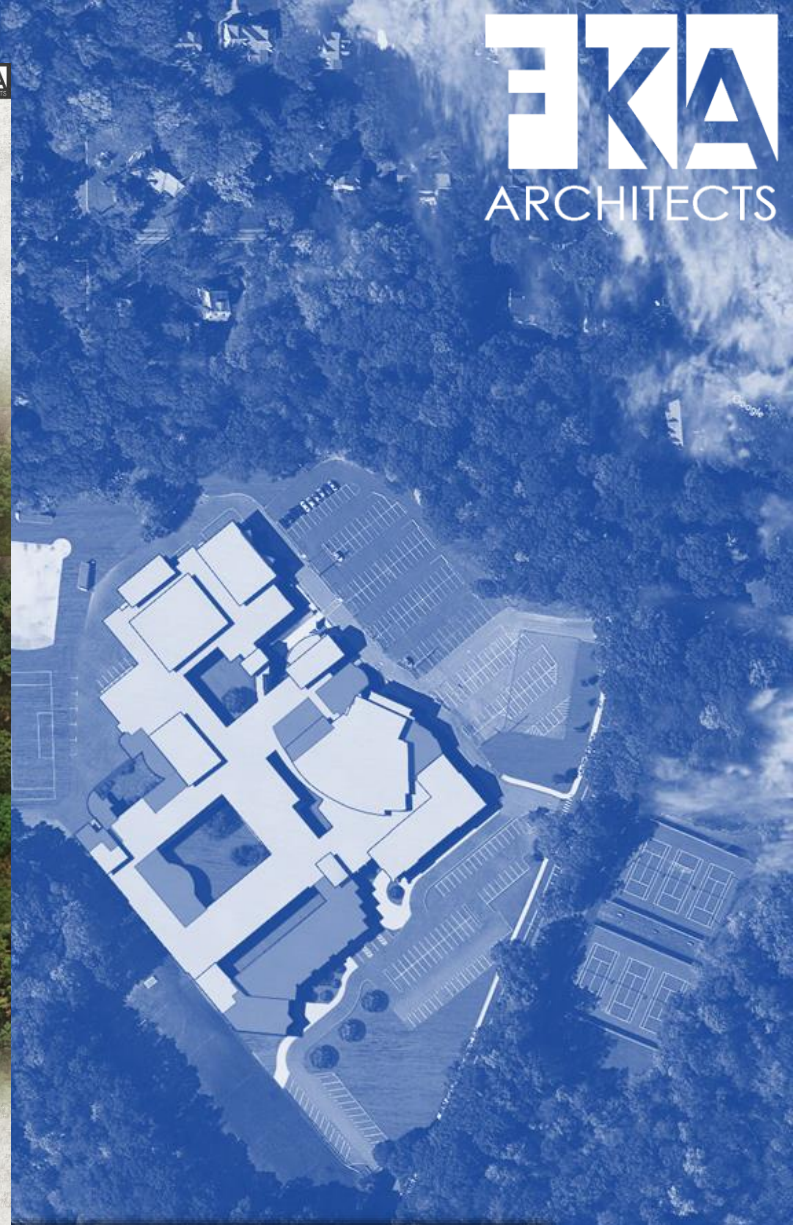
BRIARCLIFF M.S.



BRIARCLIFF MIDDLE SCHOOL PLANS

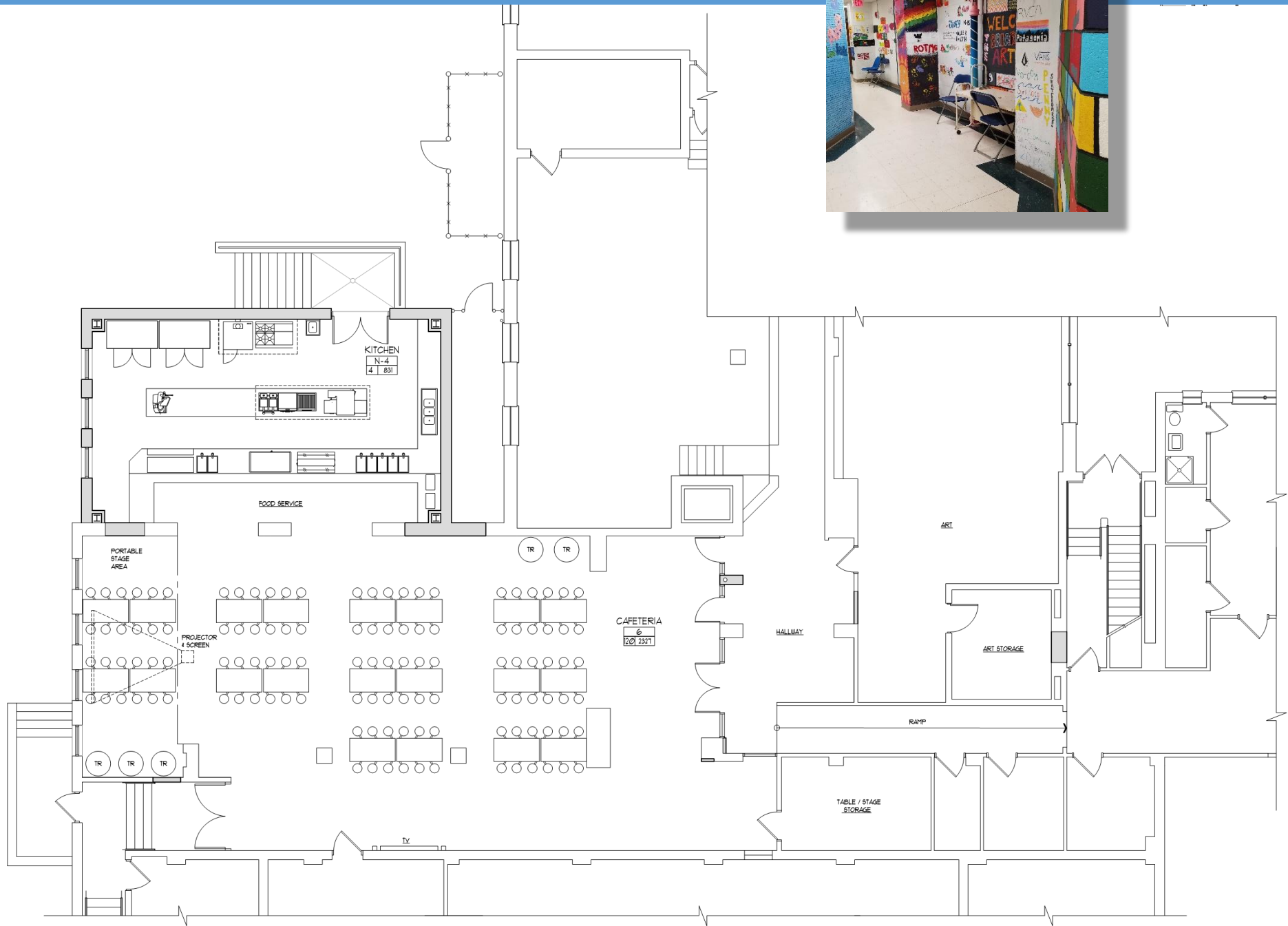


- Key:
- Proposed Building Expansion - Phase 1
 - Proposed Interior Renovation - Phase 1
 - Proposed Interior Renovation - Phase 2

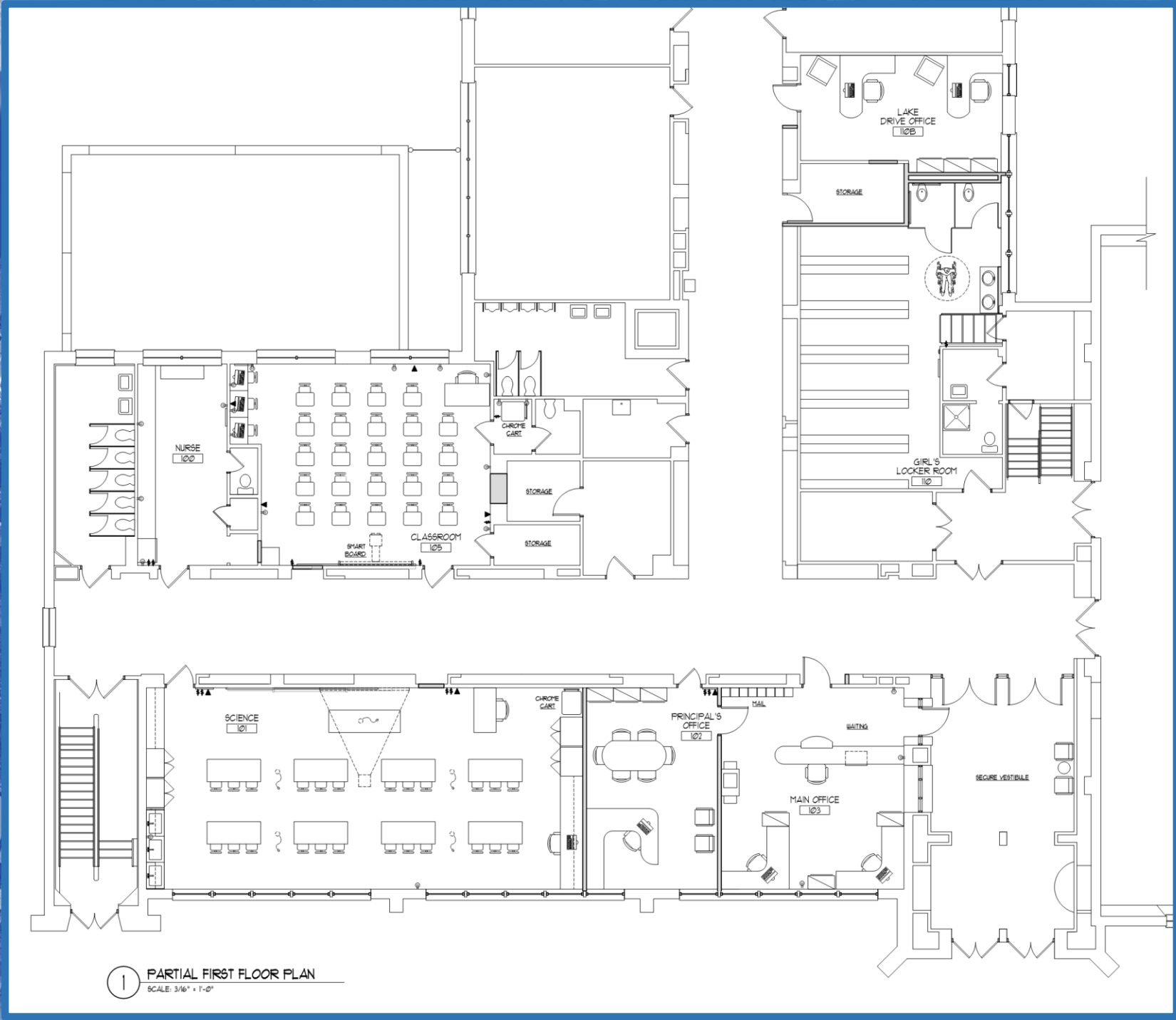


“Education is what survives when what has been learned has been forgotten.”

B.F. Skinner

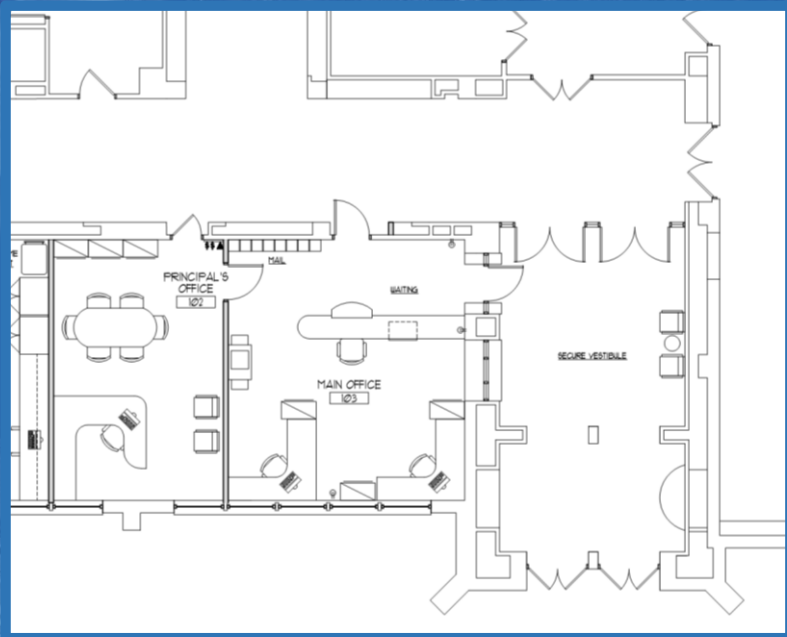


LOWER LEVEL PLAN – BRIARCLIFF MIDDLE SCHOOL

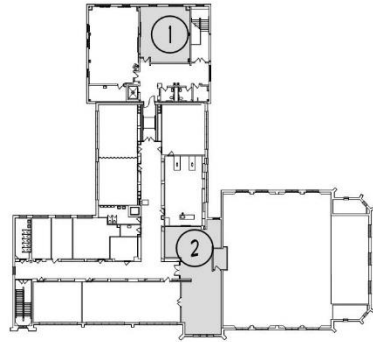


1 PARTIAL FIRST FLOOR PLAN
SCALE: 3/16" = 1'-0"

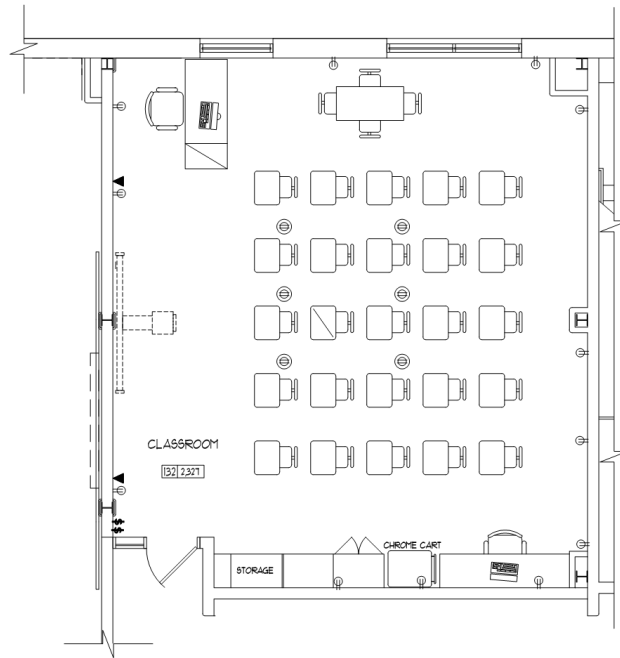
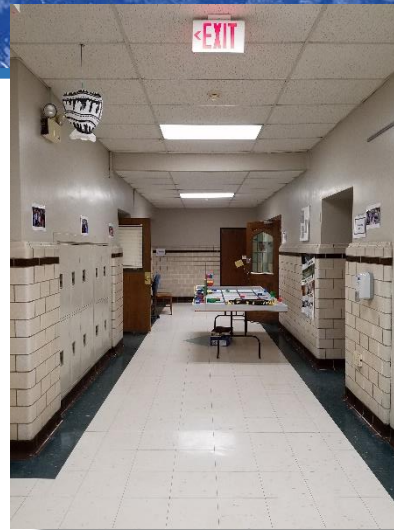
FIRST FLOOR PLAN – BRIARCLIFF MIDDLE SCHOOL



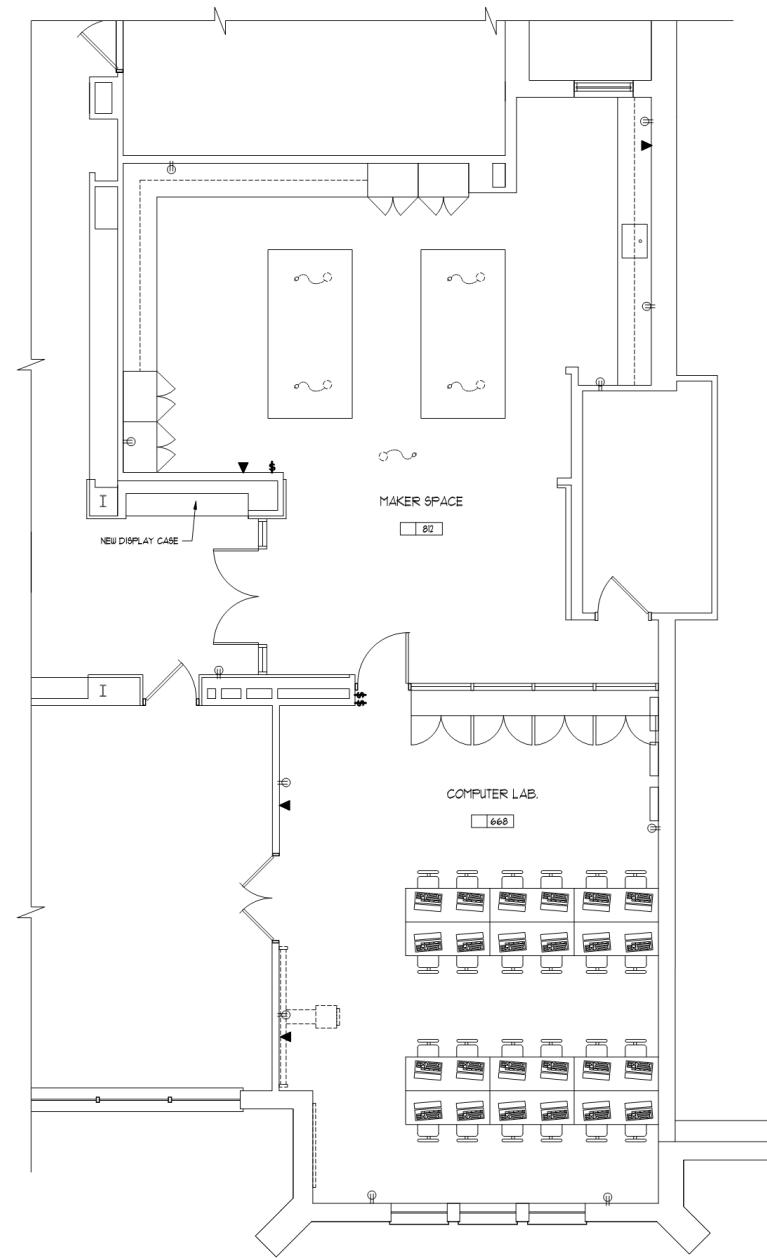
FIRST FLOOR PLAN – BRIARCLIFF MIDDLE SCHOOL



KEY PLAN
SCALE: N.T.S.

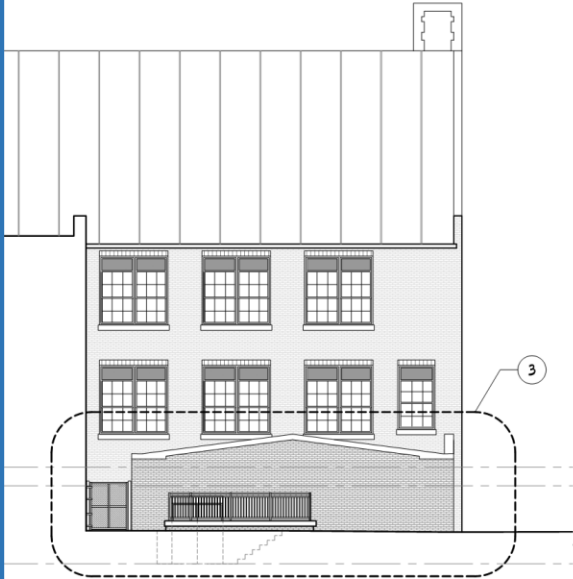


1 PARTIAL SECOND FLOOR
PLAN AT (CLASSROOM 209)
SCALE: 1/4" = 1'-0"



2 PARTIAL SECOND FLOOR
PLAN AT (MAKER SPACE)
SCALE: 1/4" = 1'-0"

SECOND FLOOR PLAN – BRIARCLIFF MIDDLE SCHOOL



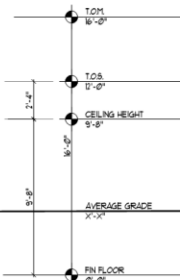
1 NORTH ELEVATION
SCALE: 1/8" = 1'-0"



2 WEST ELEVATION
SCALE: 1/8" = 1'-0"

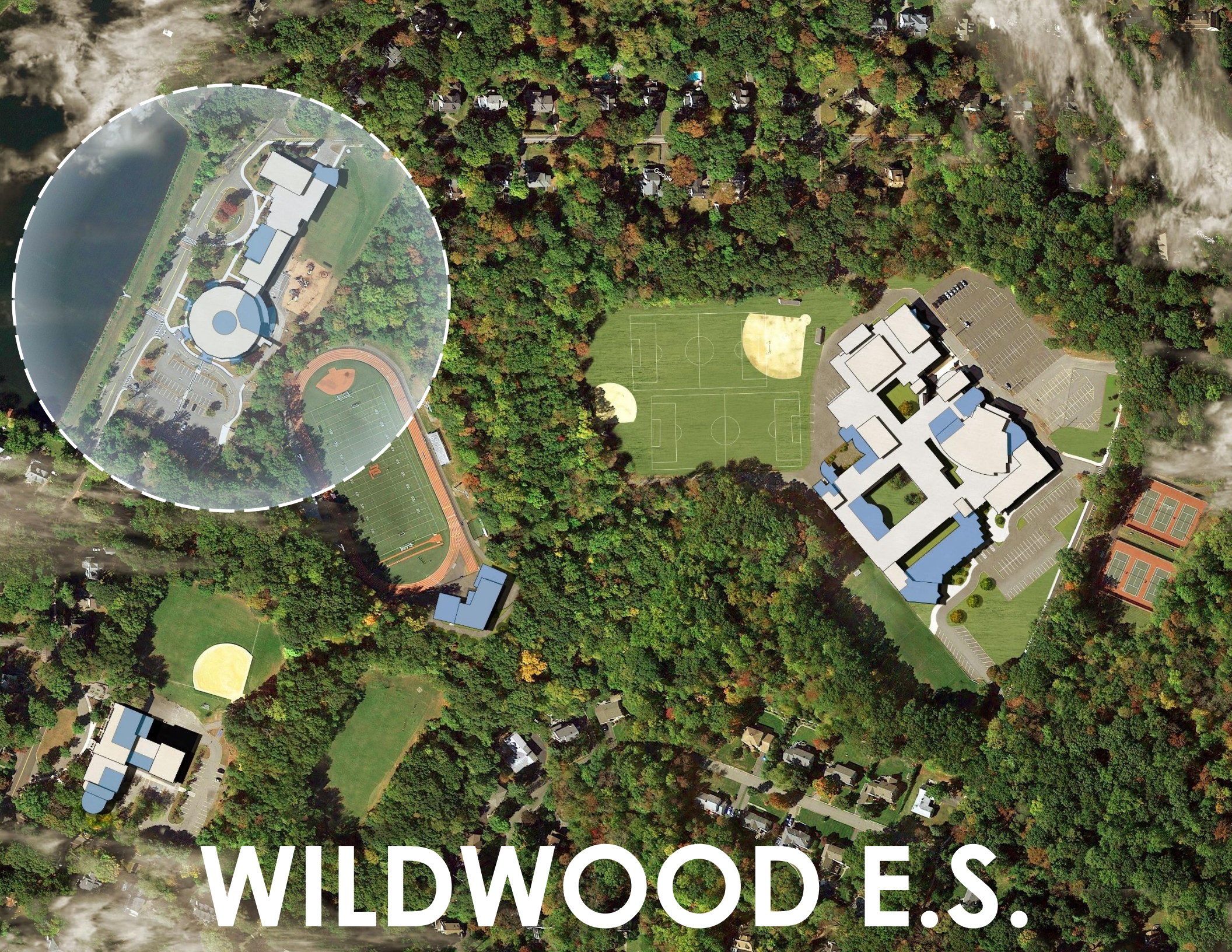


3 PARTIAL NORTH ELEVATION
SCALE: 1/4" = 1'-0"



4 PARTIAL WEST ELEVATION
SCALE: 1/4" = 1'-0"

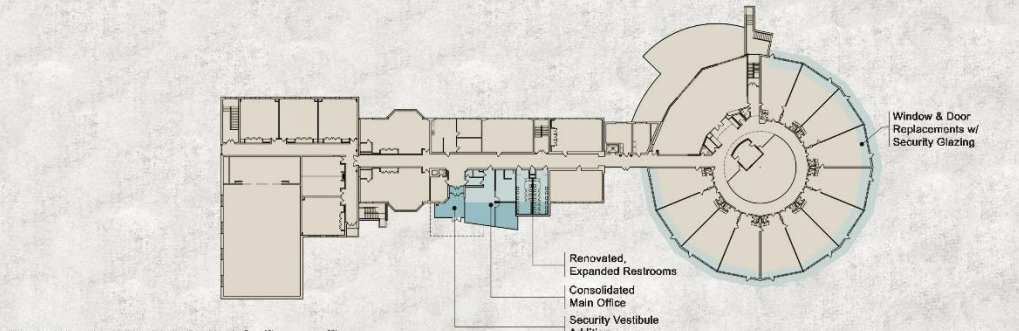
ELEVATIONS – BRIARCLIFF MIDDLE SCHOOL



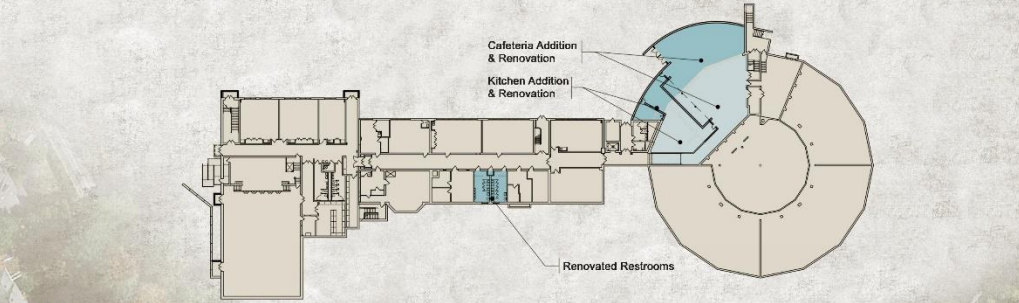
WILDWOOD E.S.



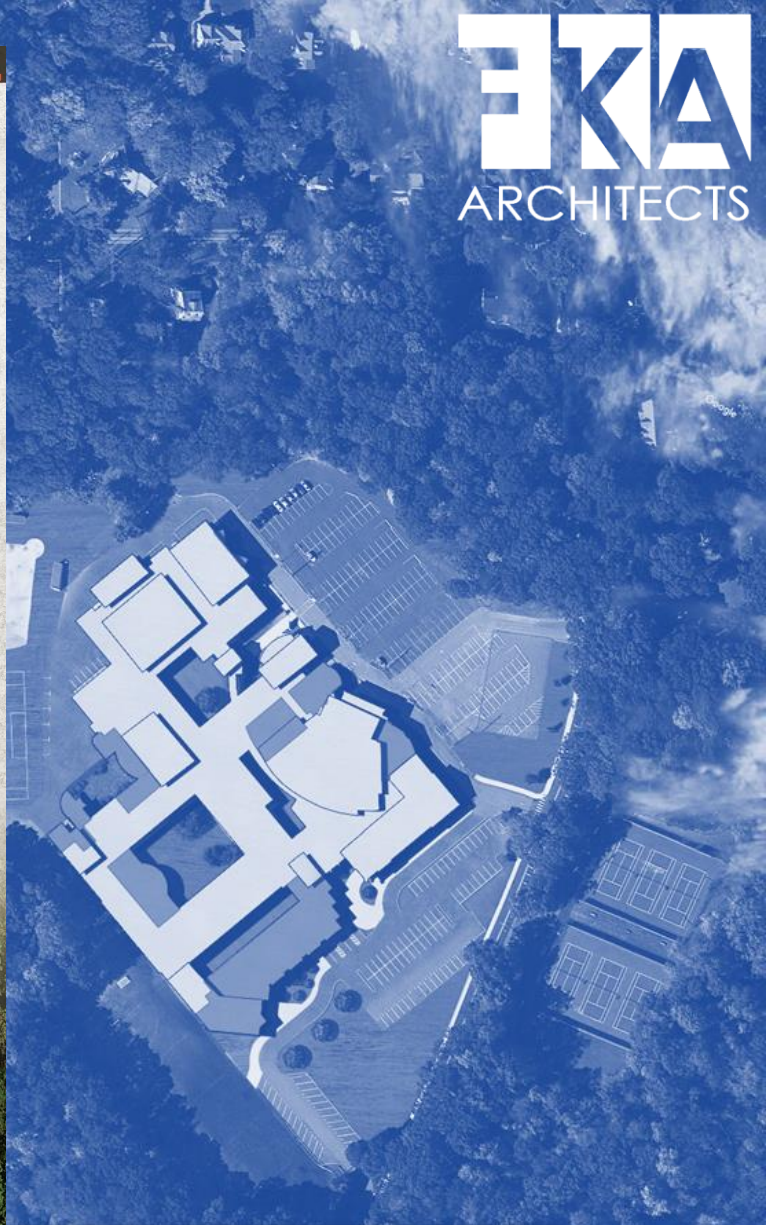
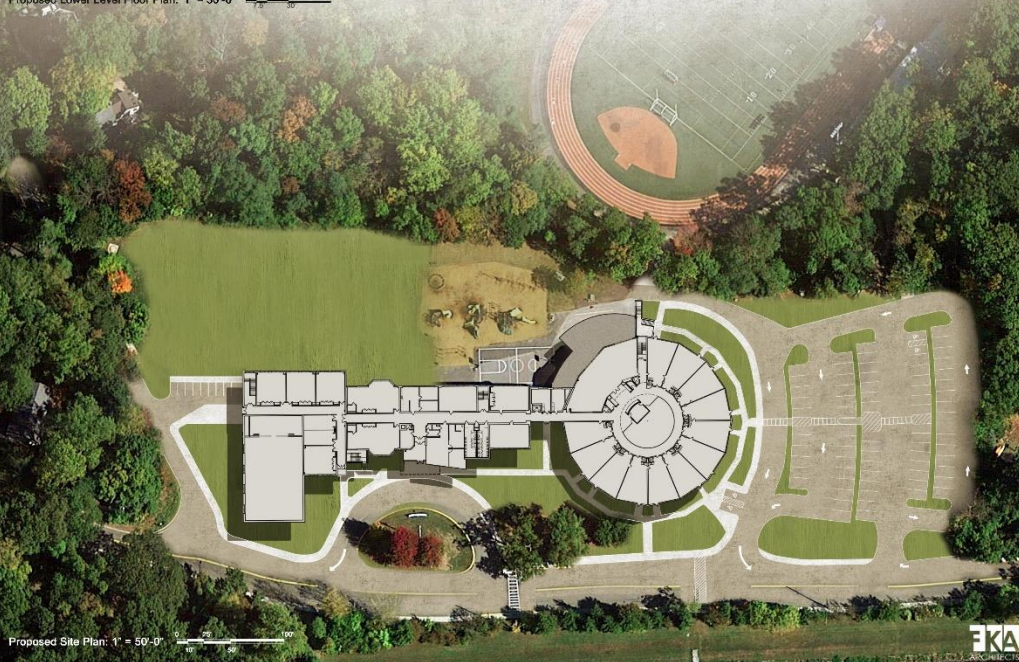
Key:
Proposed Building Expansion - Phase 1
Proposed Interior Renovation - Phase 1



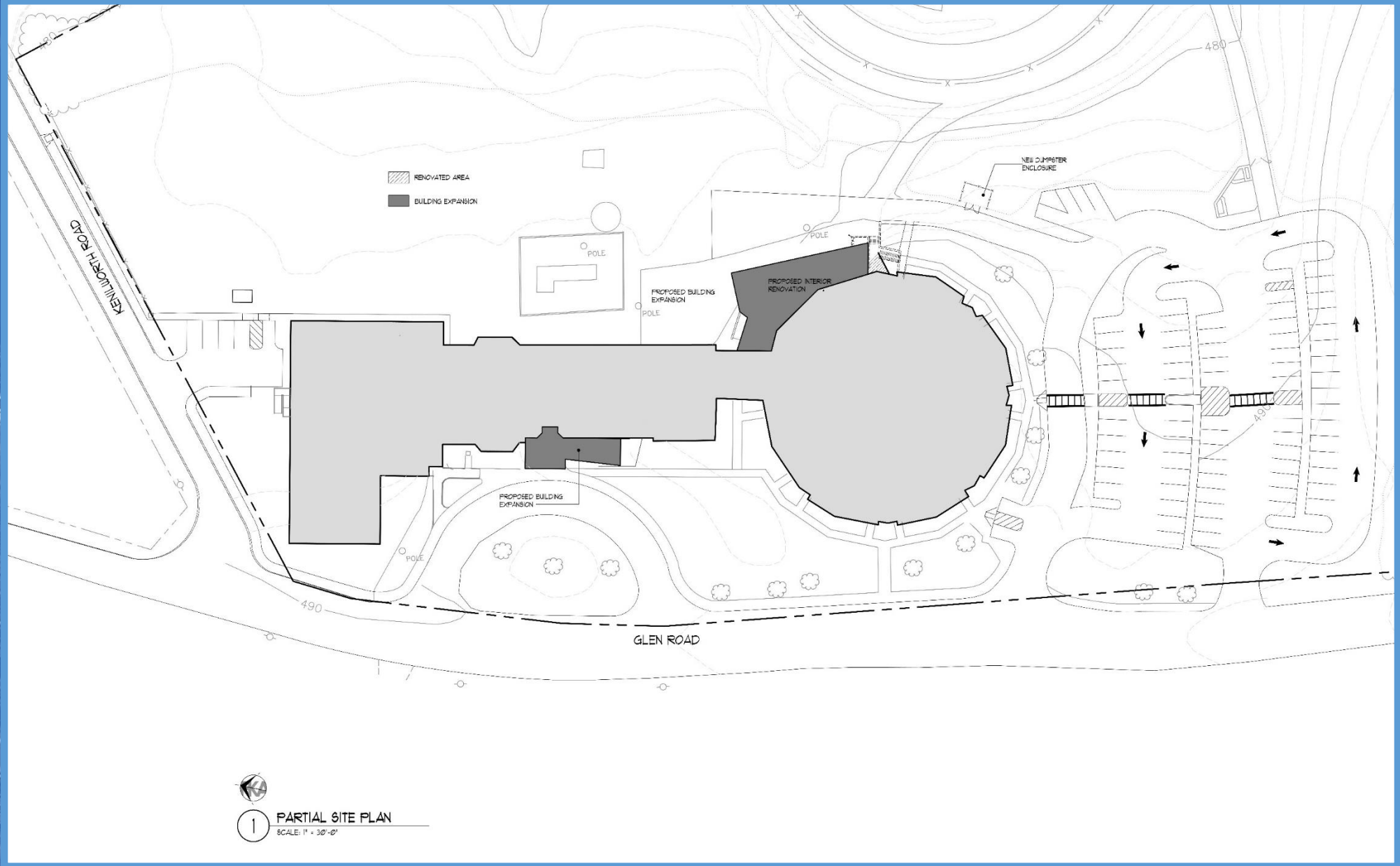
Proposed Upper Level Floor Plan: 1" = 30'-0"



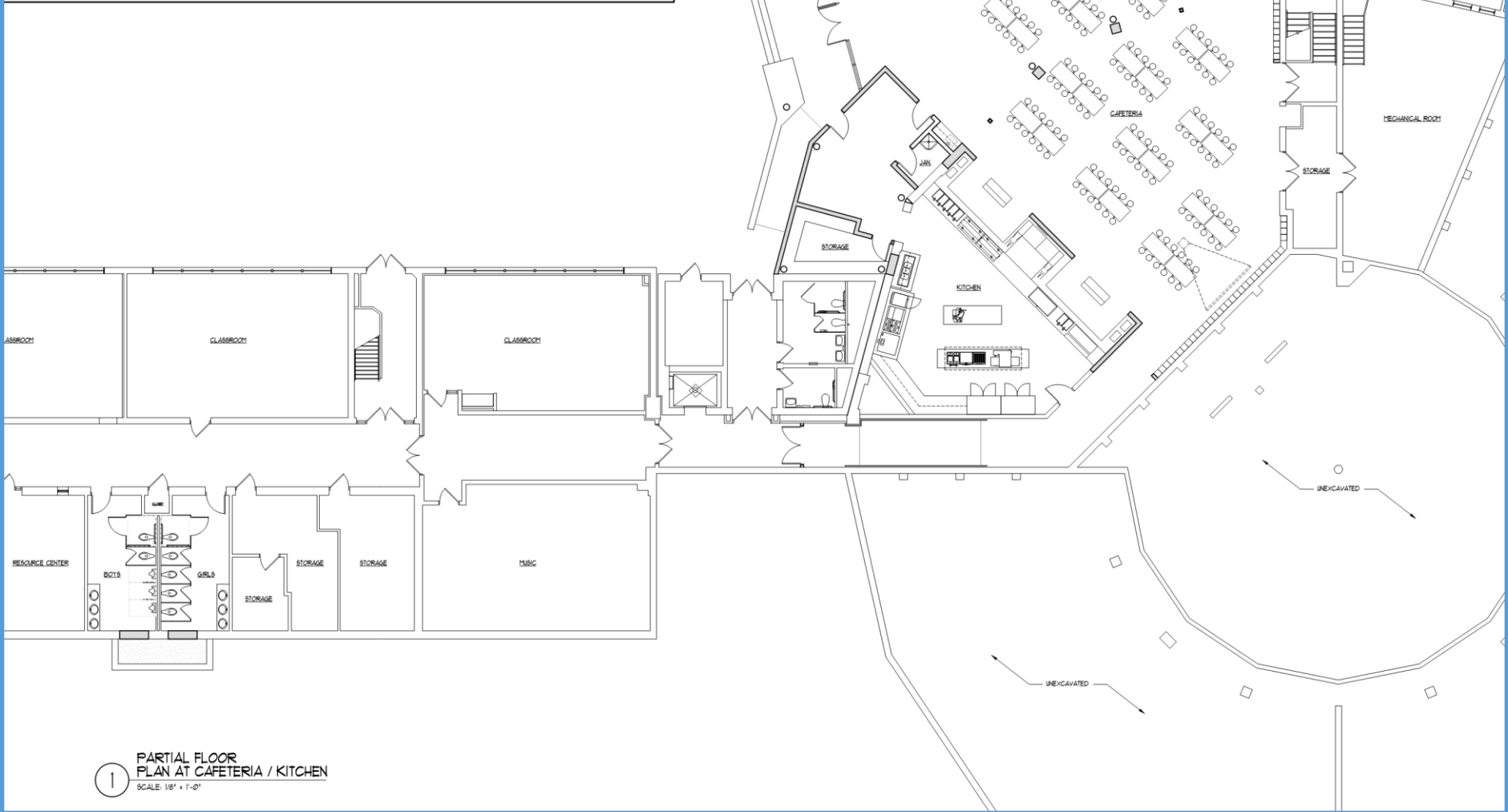
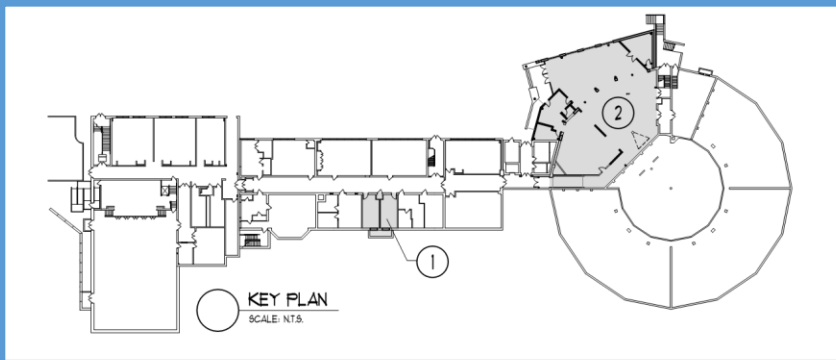
Proposed Lower Level Floor Plan: 1" = 30'-0"



“They know enough
who know how to
learn.”
Henry Adams

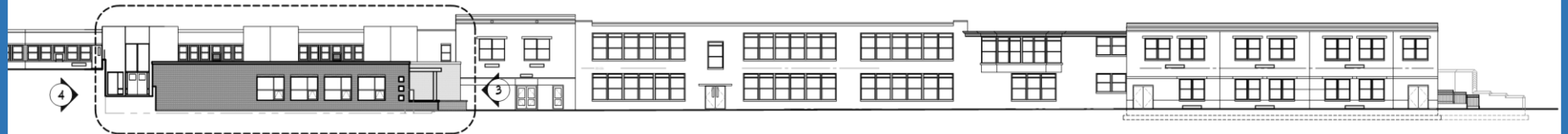


SITE PLAN – WILDWOOD ELEMENTARY SCHOOL



1 PARTIAL FLOOR PLAN AT CAFETERIA / KITCHEN
SCALE: 1/8" = 1'-0"

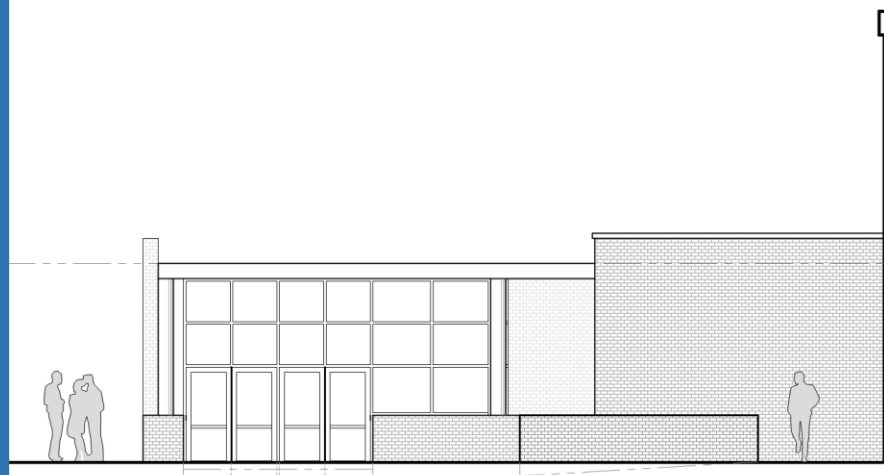
LOWER LEVEL PLAN – WILDWOOD ELEMENTARY SCHOOL



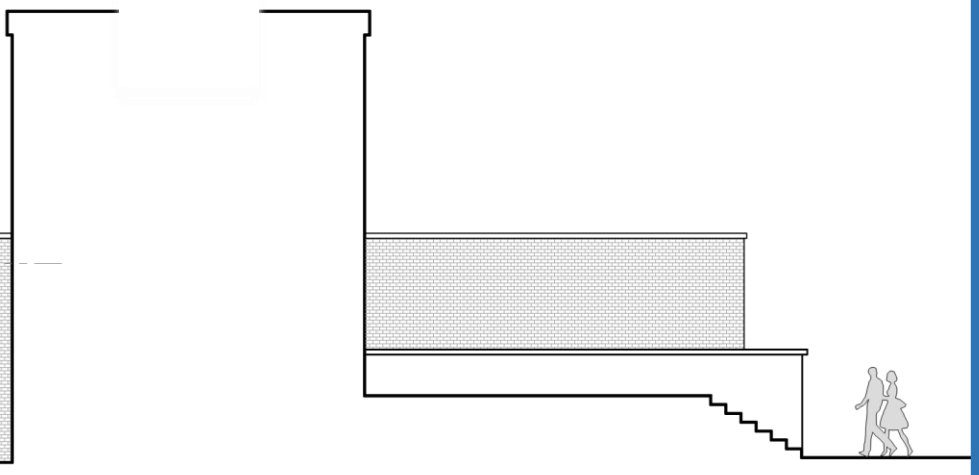
1 KEY EAST ELEVATION
SCALE: 1/16" = 1'-0"



2 PROPOSED EAST ELEVATION AT CAFETERIA
SCALE: 1/4" = 1'-0"



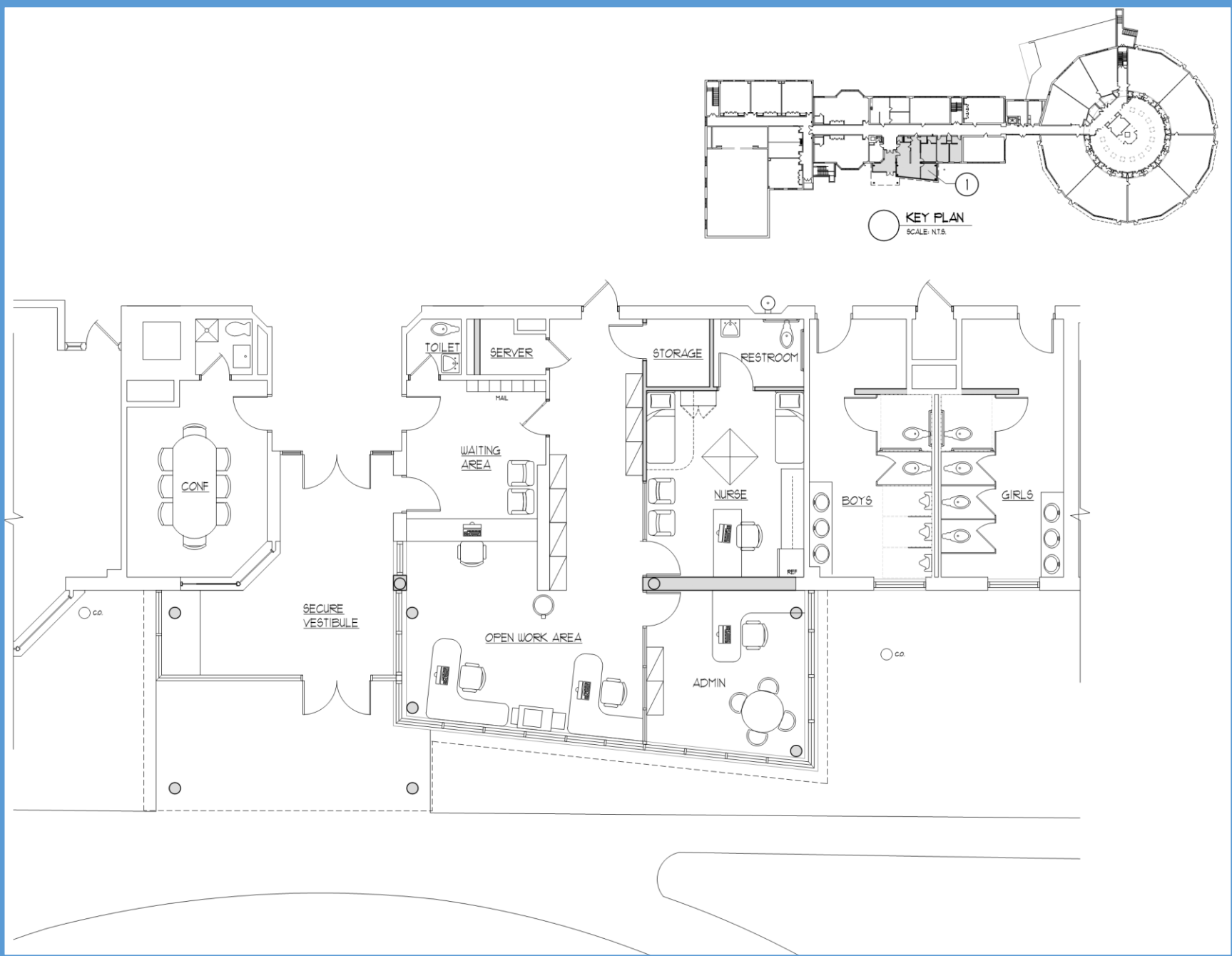
3 PROPOSED NORTH ELEVATION AT CAFETERIA
SCALE: 1/4" = 1'-0"



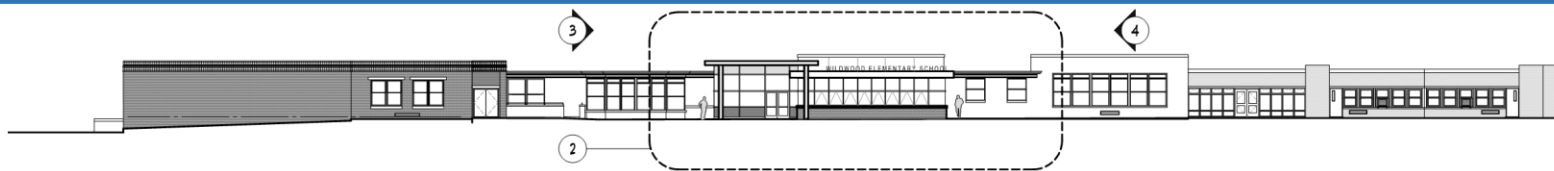
4 PROPOSED SOUTH ELEVATION AT CAFETERIA
SCALE: 1/4" = 1'-0"

ELEVATIONS – WILDWOOD ELEMENTARY SCHOOL

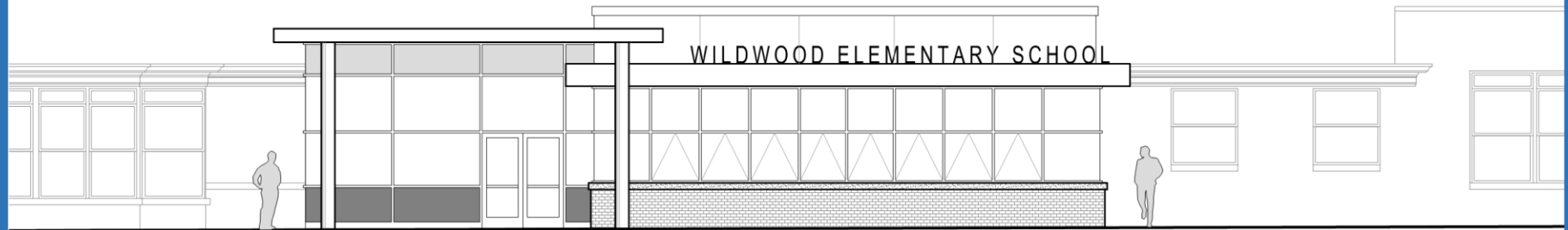




UPPER LEVEL PLAN – WILDWOOD ELEMENTARY SCHOOL



1 KEY WEST ELEVATION
SCALE: 1/16" = 1'-0"



2 PROPOSED WEST ELEVATION AT ENTRY
SCALE: 1/4" = 1'-0"

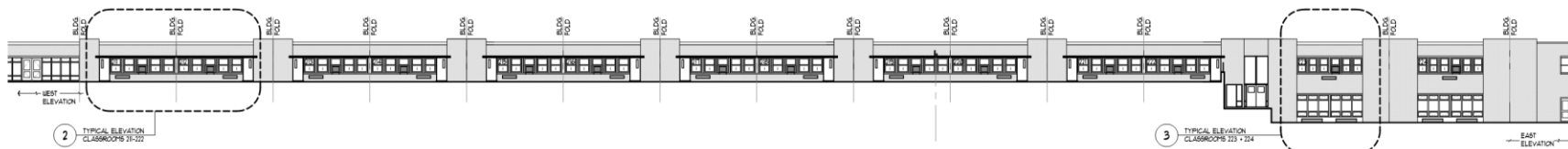


3 PROPOSED NORTH ELEVATION AT ENTRY
SCALE: 1/4" = 1'-0"

4 PROPOSED SOUTH ELEVATION AT ENTRY
SCALE: 1/4" = 1'-0"

ELEVATIONS – WILDWOOD ELEMENTARY SCHOOL



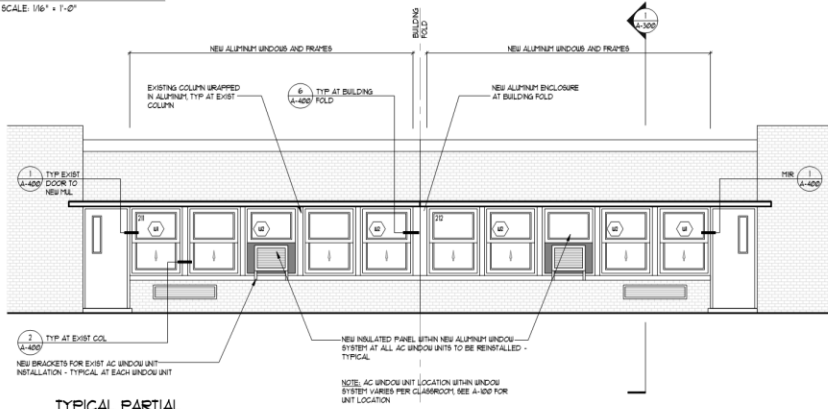


1 KEY ELEVATION
SCALE: 1/8" = 1'-0"

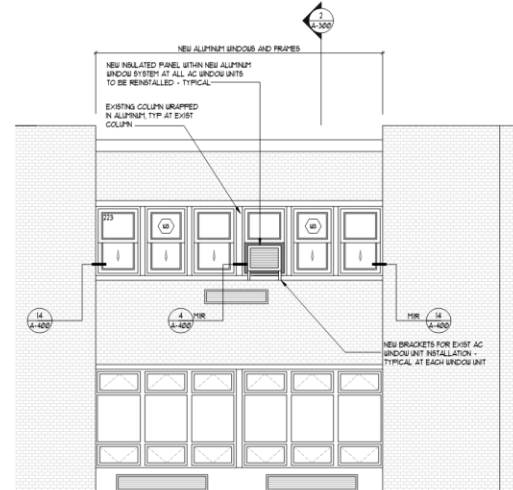
3 TYPICAL ELEVATION CLASSROOMS 223 + 224
EAST ELEVATION



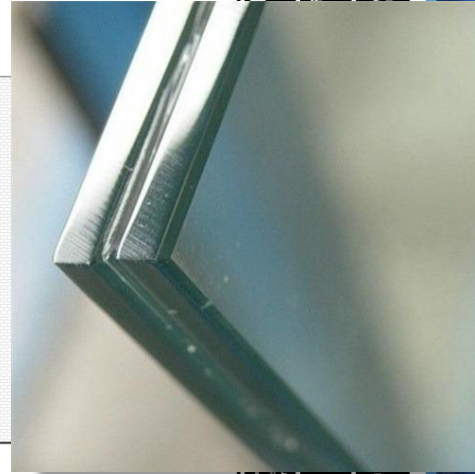
N LAKES DISTRICT
PLACEMENT PROJECT
WENYUAN SCHOOL
N LAKES, NJ 07064



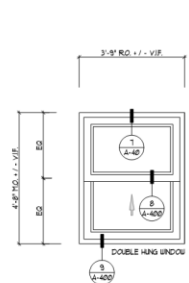
2 TYPICAL PARTIAL ELEVATIONS CLASSROOMS 211-222
SCALE: 1/4" = 1'-0"



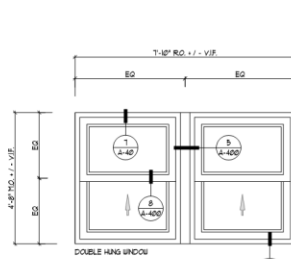
3 TYPICAL PARTIAL ELEVATIONS CLASSROOMS 223 + 224
SCALE: 1/4" = 1'-0"



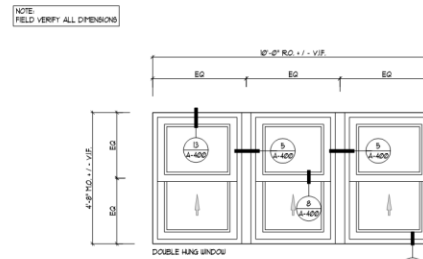
WINDOW TYPES



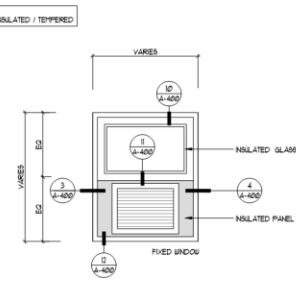
W1 ALUM. WINDOW SYSTEM
SCALE: 1/2" = 1'-0"



W2 ALUM. WINDOW SYSTEM
SCALE: 1/2" = 1'-0"



W3 ALUM. WINDOW SYSTEM
SCALE: 1/2" = 1'-0"



FIXED WINDOW AT AC UNIT
SCALE: 1/2" = 1'-0"

NOTE:
SEE PLAN (SHEET A-100) FOR VARIOUS LOCATIONS OF AC WINDOW UNITS TO BE RENOVATED WITHIN A FIXED WINDOW NEW FIXED WINDOW TO MATCH STYLE OF NEW DOUBLE HUNG WINDOWS.

Michael Mm
Signature:
Thomas J. Kastler, A.I.A. A111394
Michael R. Bieri, A.I.A. A01507700

Issue date				
1229	1/11	1/18	AS NOTED	
project no.	1804	check	scale	

PROPOSED ELEVATIONS & WINDOW TYPES

A-200

THESE DOCUMENTS ARE CONFIDENTIAL & PROPRIETARY & SHALL NOT BE USED OR DISTRIBUTED BY ANY OTHER PARTY © FKA ARCHITECTS 2017

WHEEL WINDOWS – WILDWOOD ELEMENTARY SCHOOL



MOUNTAIN LAKES H.S.



MOUNTAIN LAKES HIGH SCHOOL PLAN



- Key:
- Proposed Building Expansion - Phase 1
 - Proposed Building Expansion - Phase 2
 - Proposed Interior Renovation - Phase 2



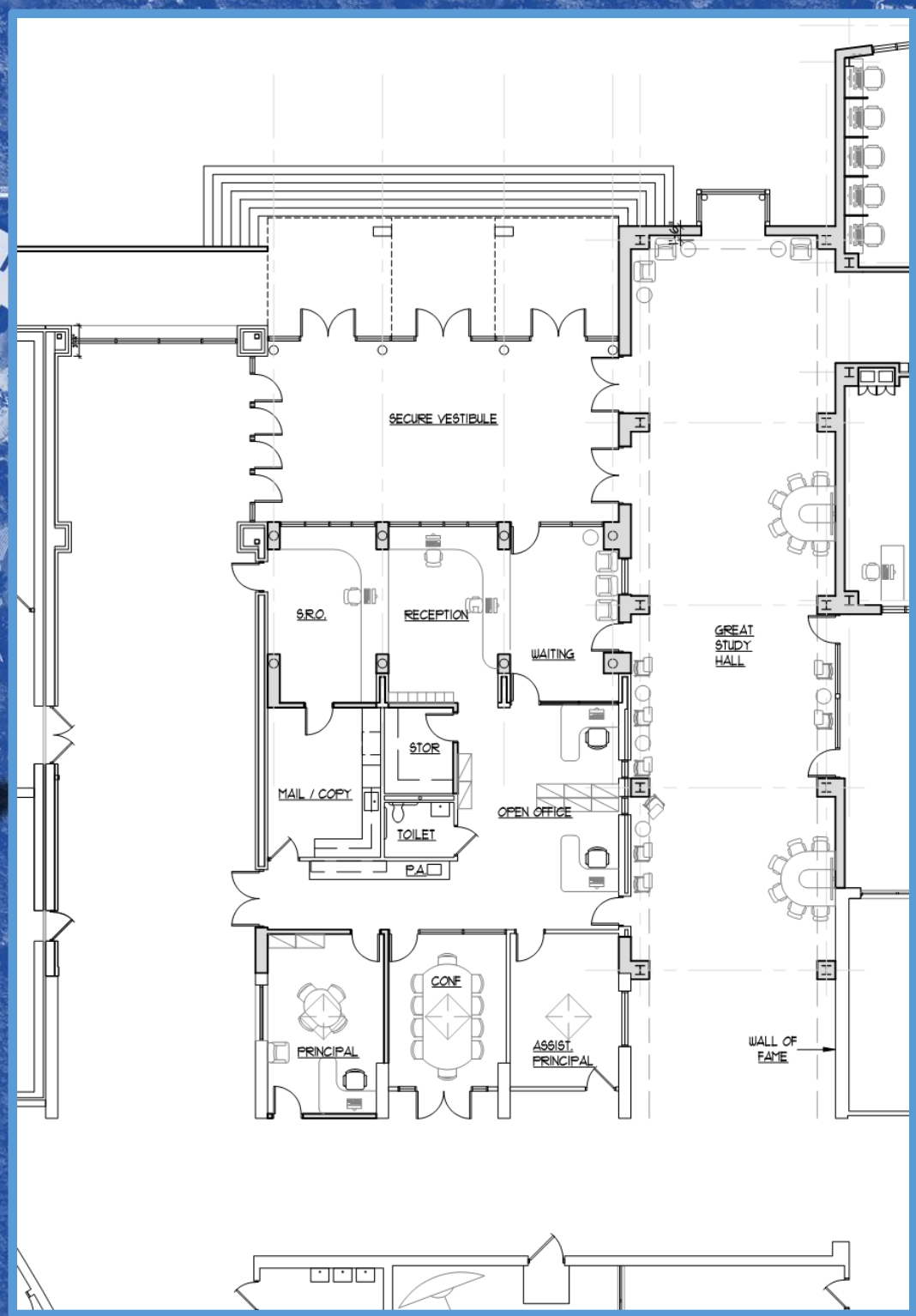
Proposed Floor Plan: 1" = 40'-0"



“What I hear I forget. What I see I remember. What I do I understand.”
Chinese Proverb



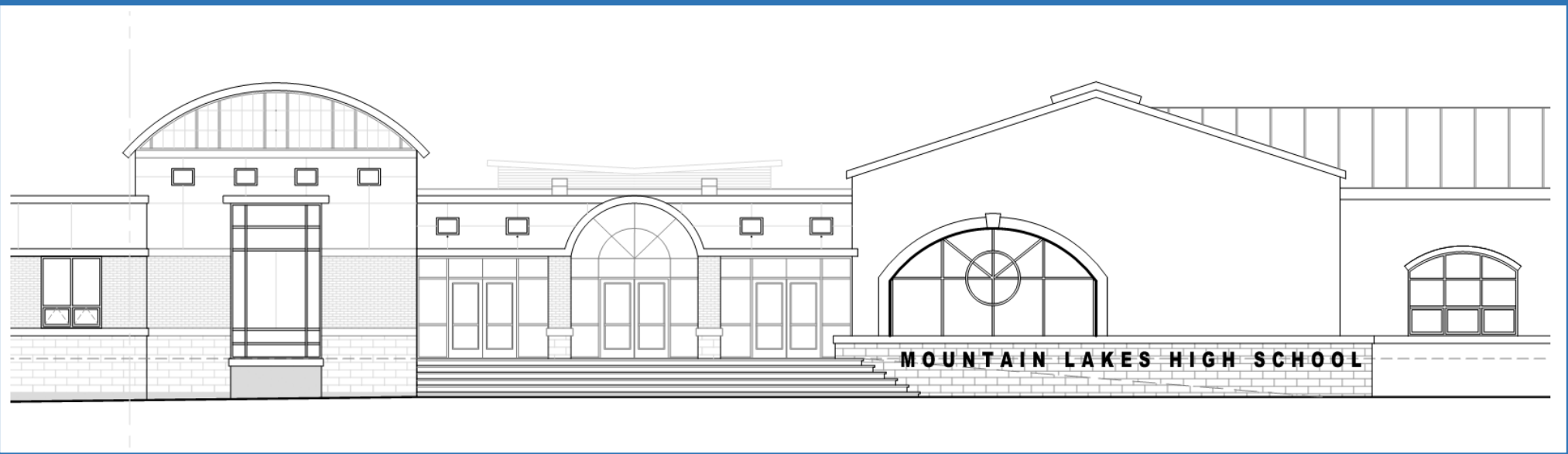
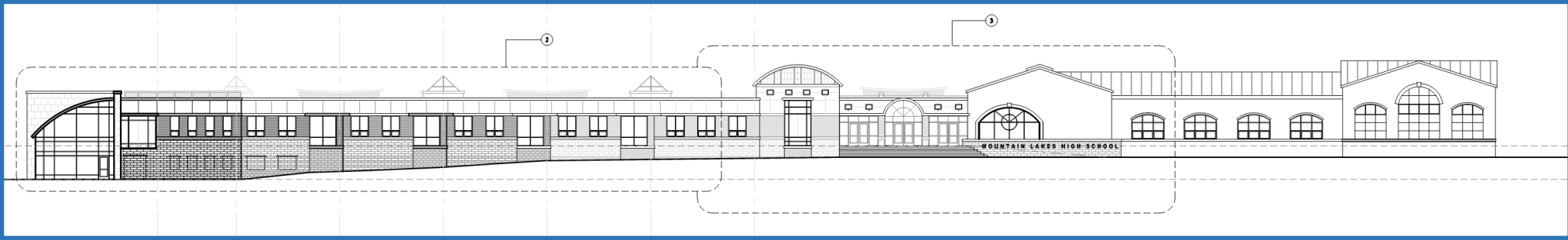
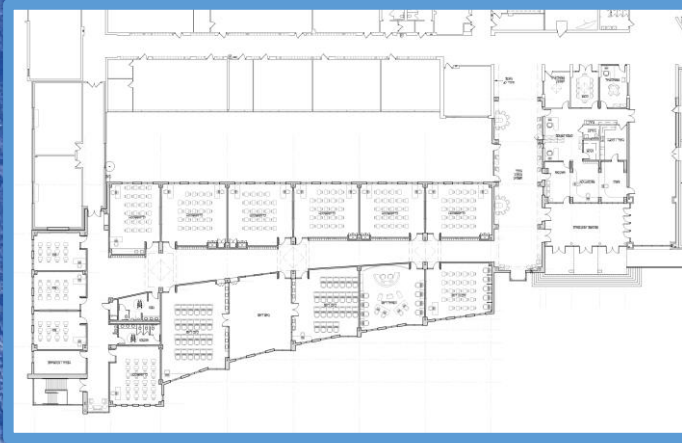
FIRST FLOOR PLAN – MOUNTAIN LAKES HIGH SCHOOL



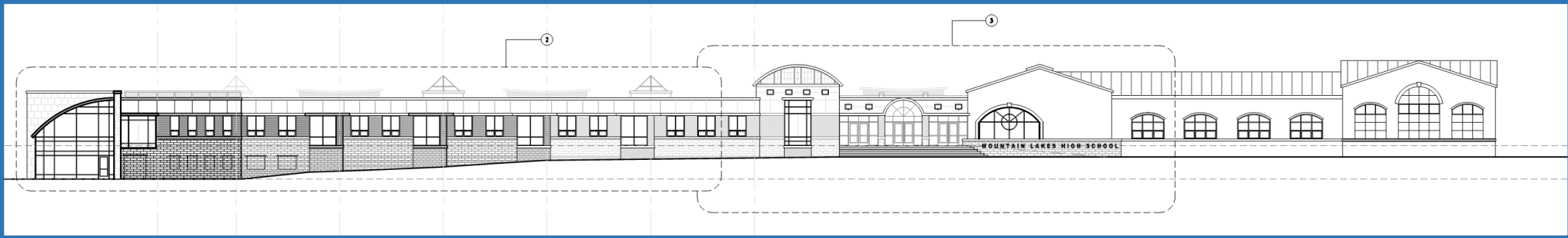
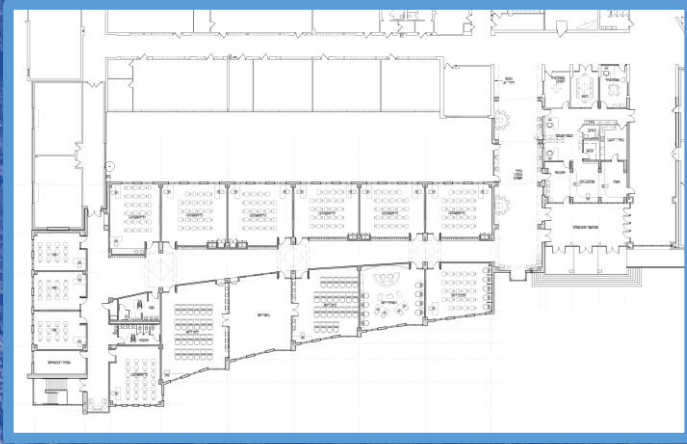
FIRST FLOOR PLAN – OFFICE AREA



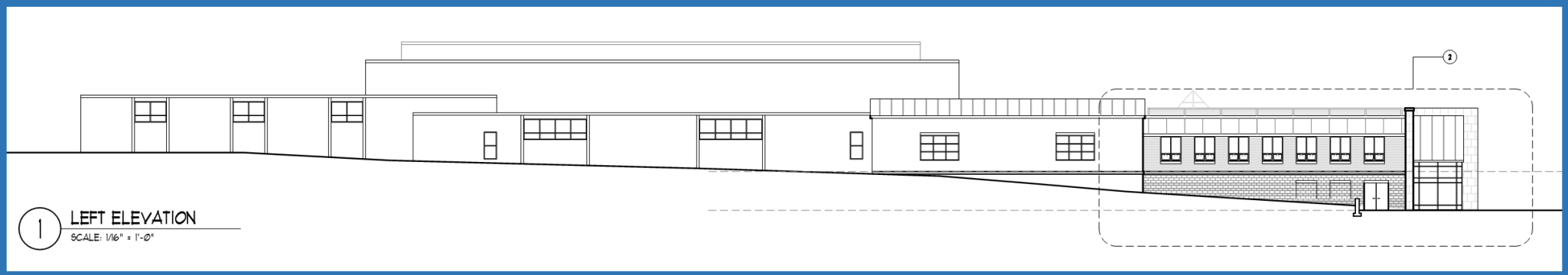
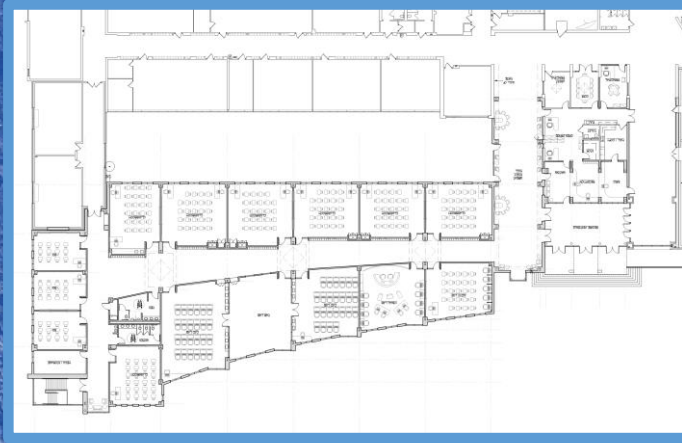
FIRST FLOOR PLAN – EDUCATIONAL WING



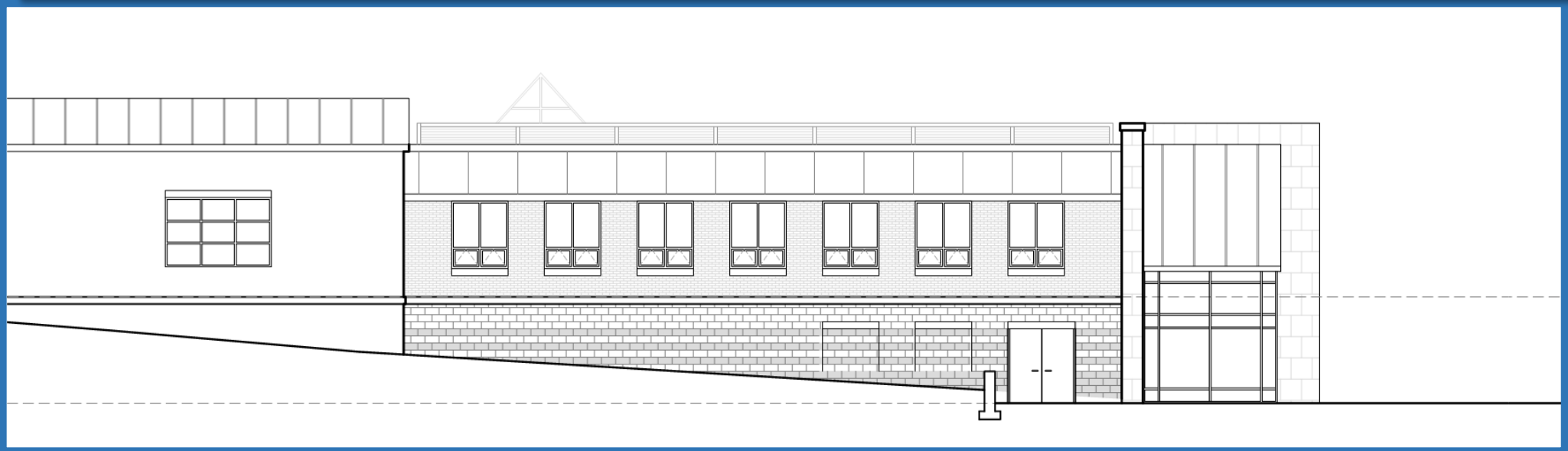
FRONT ELEVATION – MOUNTAIN LAKES HIGH SCHOOL



FRONT ELEVATION – MOUNTAIN LAKES HIGH SCHOOL



1 LEFT ELEVATION
SCALE: 1/16" = 1'-0"



SIDE ELEVATION – MOUNTAIN LAKES HIGH SCHOOL



MOUNTAIN LAKES HIGH SCHOOL



MOUNTAIN



SCHEDULE

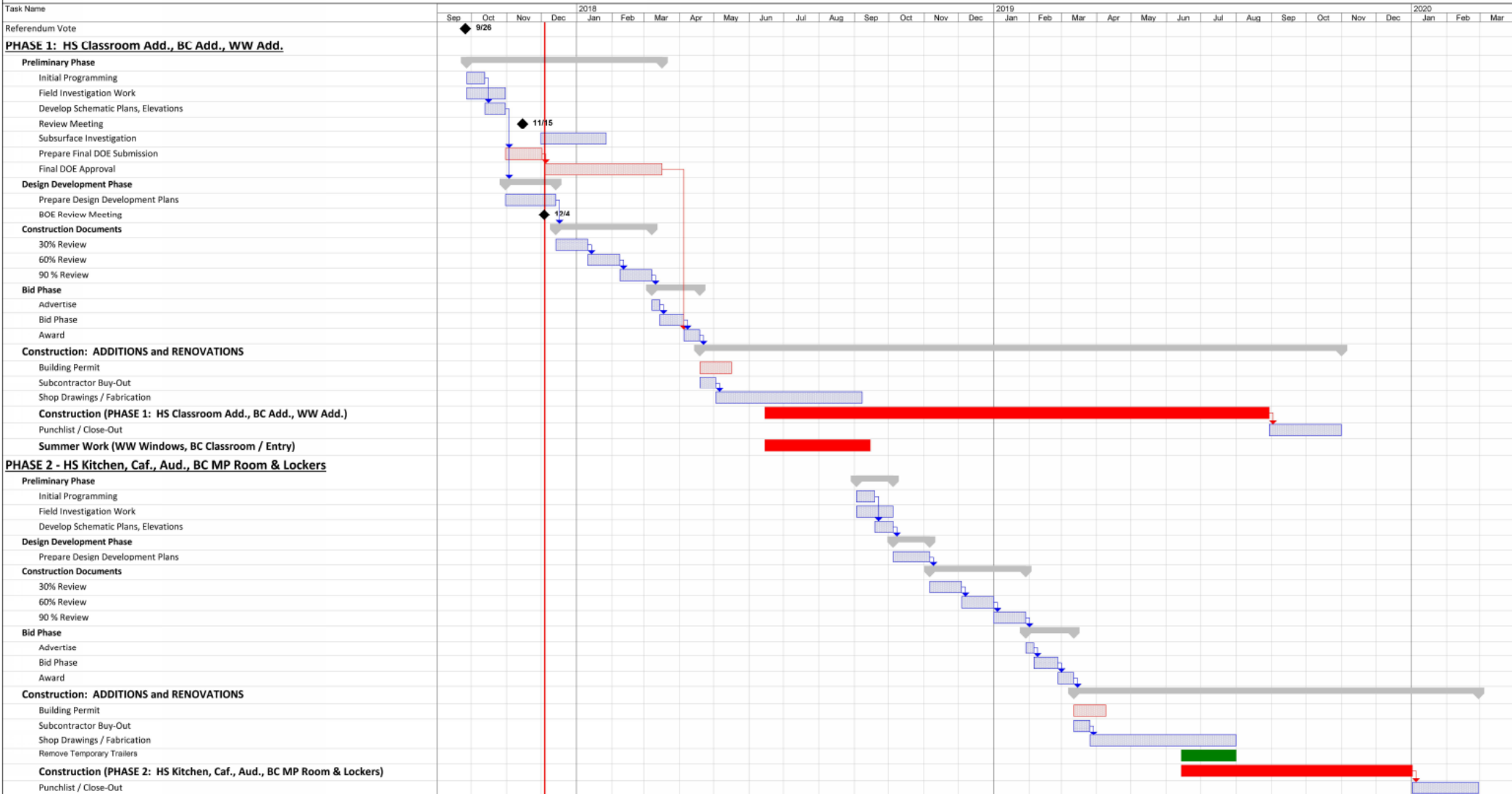
Plan for worst case scenario



SCHEDULE

MOUNTAIN LAKES SCHOOL DISTRICT
Referendum 2017

PRELIMINARY PROJECT SCHEDULE



Phase 1 Construction

Summer 2018 to September 2018

- Main Office/Vestibule
- Lake Drive Office
- Classrooms 105 & 209
- Maker Space (May take a little longer)
- Science Lab (May take a little longer)

Summer 2018 to Summer 2019

- Kitchen
- Cafeteria (May be used until switch over)



BRIARCLIFF M.S.

Phase 1 Construction

Summer 2018 to September 2018

Wheel Windows (May be some after hours)
Toilet Renovations (May take a little longer)

Summer 2018 to Summer 2019

Kitchen
Cafeteria (May be used until switch over)
Main Office & Vestibule

WILDWOOD E.S.

Phase 1 Construction

Summer 2018 to September 2019

Front Addition

Main Office & Vestibule (May be used until switch over)

Parking lot modifications



MOUNTAIN LAKES H.S.

Phase 2 Construction

Briarcliff Middle School
Mountain Lakes High School

Summer 2019 to January 2020

HIGH SCHOOL

- Kitchen
- Cafeteria
- Auditorium
- Trailer Removal

BRIARCLIFF

- Multi-Purpose Room
- Locker Rooms



Q & A

